

Sundance

2,850 SF



TYPE D

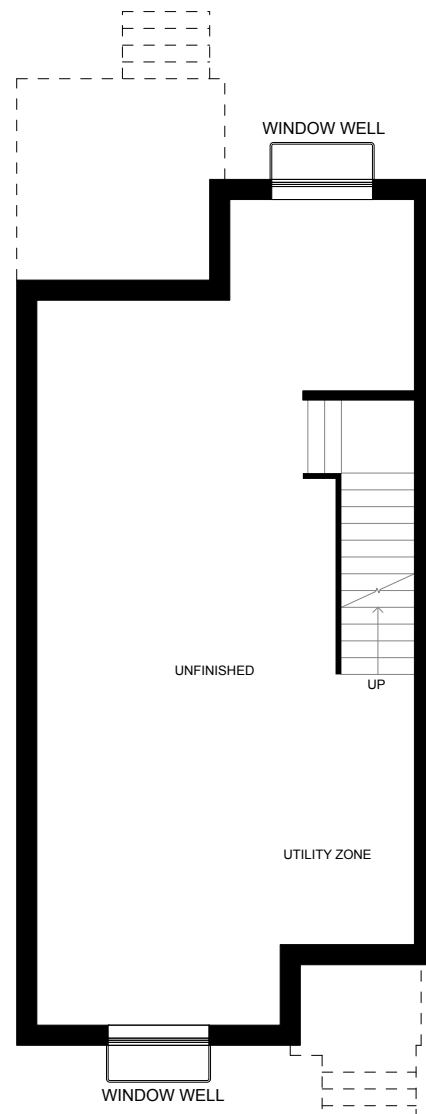
Sundance

Inspired by the Sundance Range, a mountain range located south of Innisfail.

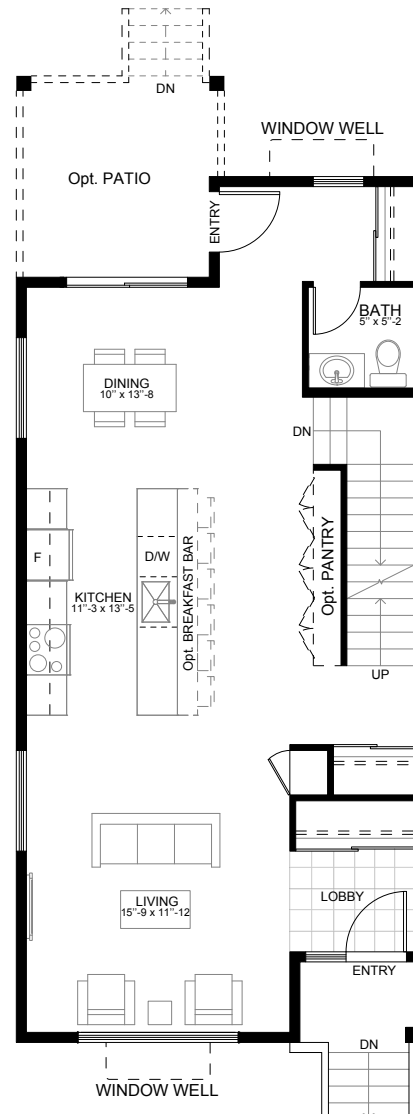


UPPER VISTA

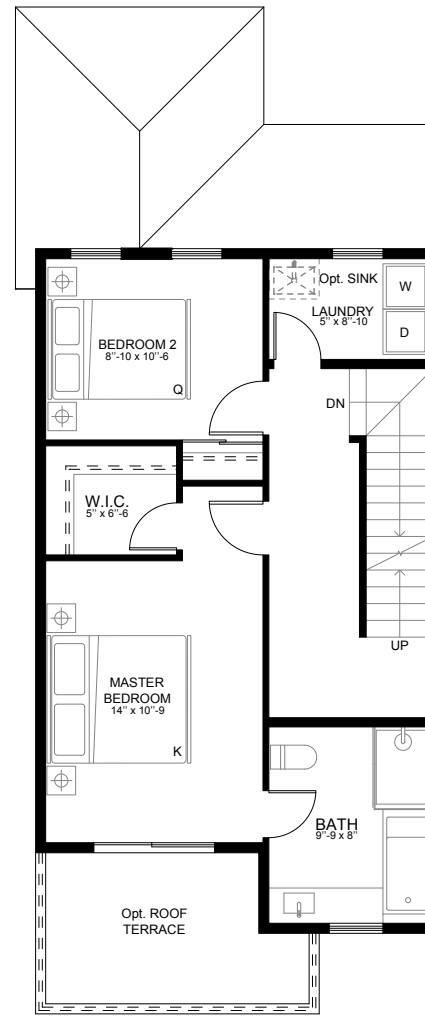
THE LAKEVIEW RESIDENCES
ON DODDS LAKE



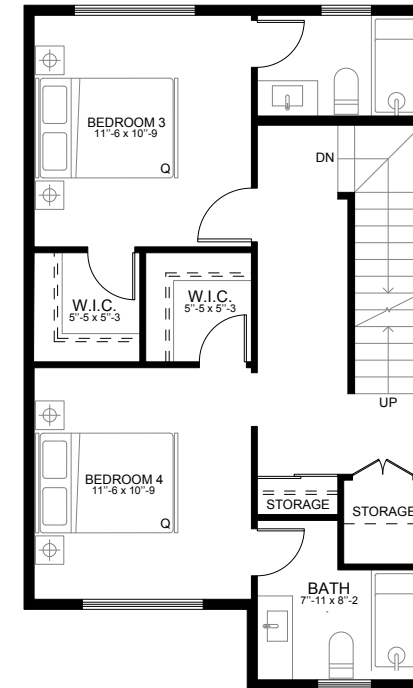
BASEMENT
789 SQ FT



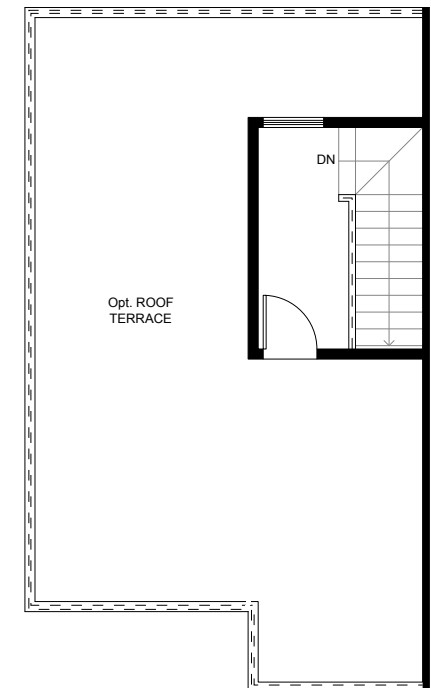
MAIN FLOOR
789 SQ FT



SECOND FLOOR
636 SQ FT



THIRD FLOOR
636 SQ FT



OPTIONAL ROOF TERRACE
FLOOR PLAN
108/528 SQ FT

ABOVE GRADE: 2061 SF

The Developer intends to commence the introduction of the above project to potential purchasers. The Developer has prepared certain information, brochures, descriptions, materials, plans, specifications, and details (all collectively called "marketing materials") regarding the Project and is disclosing and discussing the same with potential purchasers. All marketing materials are being provided for illustration and discussion purposes only and may not be relied upon in any way. Any such materials are preliminary and may be changed or modified in any way, at any time, without notice to any party. Details, dimensions, sizes, specifications, layouts, and materials are approximate and are subject to change without notice. Pricing and availability are subject to change without notice. The Vendor reserves the right to substitute any materials used in construction. The Vendor, in its sole discretion, may, at any time, without notice to any party, make any deletions, changes, or modifications to the Features and Finishes and any Marketing Material. Renderings are an artist's concept. Any statistics, financial, descriptions, and photos herein are for illustration purposes only. Consult your own sales representative or relevant professional. No representation or warranty, express or implied, is made herein and no reliance should be made in any way. E.&O.E.

EVERTRUST

DEVELOPMENT GROUP CANADA INC.